

Fast responding palm sized Spectrometer and Dose Rate Meter will instantly measure and identify any material for the presence of radioactivity

- Lightweight and palm sized
- Large nuclide isotope library
- Simplified use and easy to understand operation
- Manual or automatic operation modes
- Automatic energy stabilization (no check source required)
- RadView software for integration



MSPEC

SPECTROSCOPIC PERSONAL RADIATION DETECTOR (WITH OPTIONAL NEUTRON DETECTION)

Locate and Identify Specific Isotopes

MSpec palm sized gamma ray spectrometer utilizes a Sodium doped Cesium Iodide Crystal with high signal to noise ratio PMT and state-of-the-art electronics for the most accurate results. The MSpec scans suspect material and quickly analyzes to determine what nuclide isotope is present and then categorizes the result as Medical, Industrial, Natural Occurring Radioactive Material (NORM), or Special Nuclear Material (SNM).

Operator Friendly

The MSpec has two modes a user may choose from:

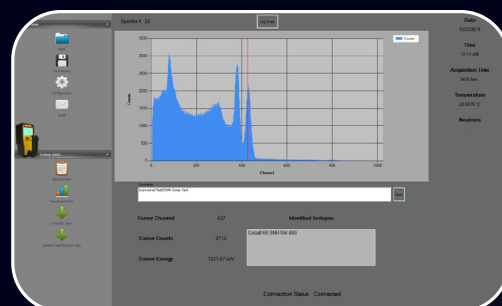
Automatic is the quickest and easiest to use mode. Set in Automatic the MSpec will search for and detect radioactive material. Once in range the instrument will automatically begin isotopic identification and display the results.

Manual mode gives the user greater control including the ability for longer scan times which increases the accuracy of results. This is especially important if there are multiple isotopes present in the same sample.

RadView Software

RadComm's exclusive RadView software interfaces with a user's PC and enables a user to see detailed results of recorded scans in a Histogram format. Each result can be edited with comments, saved as a PDF and archived for future reference or email compatibility.

Meets ANSI 42.48:2008 American National Standard Performance Requirements for Spectroscopic Personal Radiation Detectors (SPRDs) for Homeland Security.



Size

- Detector Dimensions:
- 4.75" L (12.1cm) x 2.5" W (6.4cm) x 1.22" H (3.1cm)
- System weight: 0.4 lbs (0.2 kg)

Electronics/Mechanical

- Easy to operate 5 button keypad
- Audio & visual alarm with vibration
- Micro-controller based architecture
- Sodium doped Cesium Iodide crystal (CsI(Na)) ½" x 1¾" (13mm x 38mm)
- Internal Lithium Ion battery with charging LCD indicator
- Battery life up to 10 hours
- Battery recharging time up to 4½ hours using wall charger or PC USB

Environmental

- Operating Temperature: 14°F(-10°C) to +113°F(+45°C)
- Shock Resistance: up to 1 meter drop test

Display

- Viewing area: 2½" L (6.35cm)
- LCD with backlight 128 x 128 resolution
- Backlight auto-off: 180 seconds with push button auto-on
- Battery level indicator
- Warning Messages: move closer; move away; high dose rate move away; cps exceeds threshold; dose rate above threshold; stabilization off no ID; stabilization required; re-calibration required; memory is full; neutrons detected (with optional Neutron Detector)
- Real-time spectrum display shows accumulated spectrum

MSpec & RadView Software

- Menu driven user interface
- LCD with backlight 128 x 128 resolution
- Menu feature selection controlled by a five push button actuation
- Selectable features: Automatic or Manual Modes, Stabilization mode, CPS Alarm Threshold, Dose Alarm Threshold, Identification Time
- PC configurable: Reports, Date & Time, Units of Measure, Language, etc.
- Selectable displayed units - CPS, R/hr, Sv/hr

Response/Sensitivity

- Energy range: 30 KeV – 3.0 MeV (Gamma)
- Dose rate range: From 0.01 µSv/hr to 10.0 mSv/hr
- Resolution: 9% or better at 662 KeV
- Gamma spectrum: 1024 channels
- Optional neutron detector sensitivity: 0.6 CPS/NV
- Supports auto stabilization - Range 41°F (5°C) to 131°F (55°C)



Real-time spectrum display



Corporate Head Office

Scott Aikin
Saikin@radcommsystems.com
Jeff Adams
jadams@radcommsystems.com
2931 Portland Drive
Oakville, ON Canada L6H 5S4
Tel. +1 (905) 829-8290
Toll Free. 1 (800) 588-5229
Fax. +1 (905) 829-1406

USA

Joshua Hunter
jhunter@radcommsystems.com
602 E. Lincolnway Ave.
Valparaiso, IN USA 46383
Tel. +1 (773) 680-8430
Toll Free. 1 (800) 588-5229
Fax. +1 (219) 510-5764

Europe

Wim van Hove
wim.van.hove@radcommeurope.com
Watertorenweg 32, 2230 Herselt, Belgium
Tel. +32.14.75.02.13
Fax. +32.14.75.02.16

China

Zhenhau Wang
wang.zhenhau@ehc-global.com
212-215 Malu Industrial Park, No. 58
Chen Bao Rd., Jiading
Shanghai, 201801, China
Tel. +86-21-69153031
Fax. +86-21-69153231

Latin America

Eduardo Ballesteros
analiticacontrol@prodginy.net.mx
Amatista No.27, El Pedregal
Atizapán de Zaragoza, 52948, Estado De Mexico
Tel. (52) 55 5077 4633/ (52) 55 3615 4910

Black Sea

Osman Tureyyen
metkim@metkim.com
Kavacik, Onarimli Sokak
No 9 Altay Han
Daire: 8 Beykoz, Istanbul, Turkey
Tel. +90 (216) 425-1412
Fax. +90 (216) 425-1432

India

Neelakshi Bhargava
neelakshi@radcommsystems.co.in
C-34, Ground Floor, Sawan Park, Ashok Vihar
New Delhi 110052, India
Tel. +91-9717671924
Fax. +91-9818650118